




Product Collection


- ☑ **Next-Gen eVTOL Aircraft – F15**
- ☑ **Long Endurance Patrol Unmanned Aircraft – Shadow S3**
- ☑ **Unmanned Transport Helicopters – Grey Whale G1**
- ☑ **SWARM**


Next-Gen eVTOL Aircraft





F15 Industry Flagship Edition

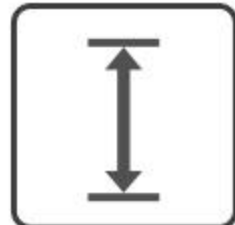
**Aircraft Livery**
Optional

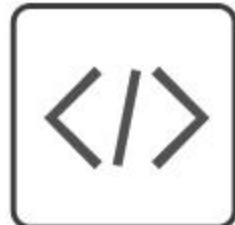
**5kg**
Max Payload

**100min**
Max Endurance

**30km**
Real-Time HD
Video Transmission

**Level 8**
Wind Resistance

**7000m**
Max Service
Ceiling

**Open Ecosystem**
PSDK, MSDK,
Cloud API

Overall Dimensions (Blades Excluded)	1710*407*525mm (Assembled) 887*407*525mm (Disassembled)	Communication Range	30km
Main Rotor Diameter	1971mm	Communication Frequency	1430-1444MHz
Maximum Take-off Weight	19kg	Wind Resistance	Level 8
Max Payload	5kg	Hovering Ceiling	7000m
Aircraft Weight	14kg (Including Battery)	Hover Accuracy	Vertical: ±2.0m (GPS)±0.1m (RTK) Horizontal: ±1.5m (GPS)±0.1m (RTK)
Cruising Speed	50-70km/h	Max Climb/ Descend Speed	4m/s
Maximum Horizontal Speed	100km/h	Operating Temperature	-20°C~+55°C
Maximum Endurance	100min (Unloaded)	Storage Temperature	-20°C~+45°C
Waterproof rating	IP54	Obstacle Avoidance Function	Support

*The parameter values listed on this page for the F15 are all measured in a controlled environment and may vary under different conditions. Please note that actual experience may differ.

Supports Optional Aircraft Livery



Open Ecosystem

Provides PSDK, MSDK, and Cloud API
Supports third-party development
Quickly adapts to mainstream payloads like
EO cameras, LiDAR, and gas detectors



Rich Accessories



7-inch HD Tablet
Handheld Device



8.4-inch Industrial-grade
Remote Controller



Communication
Base Station



High-capacity
Intelligent Battery

Flight Safety

Aircraft Status Monitoring System



Multi-Sensor Redundancy



FPV Auxiliary Visual Perception



Smart Return-to-Home

In case of mission completion,
low battery, or loss of signal



Long Endurance Patrol Unmanned Aircraft

Efficiency Revolutionizes Innovation



Shadow S3



100min
Maximum
Endurance



15KM
Real-time HD
Video Transmission



Level 7
Wind Resistance



100km/h
Maximum
Flying Speed



AI Recognition
Target Tracking
and Recognition



Innovation
New Experience

Overall Dimensions	1221*157*442mm (Assembled) 536*237*332mm (Disassembled)	Main Rotor Diameter	1332mm
Maximum Endurance	100min	Wind Resistance	Level 7
Maximum Take-off Weight	7kg	Hovering Ceiling	7000m
HD Video Transmission Distance	15km	Hover Accuracy	Vertical: ±2.0m (GPS) Horizontal: ±1.5m (GPS)
Maximum Horizontal Speed	100km/h	Obstacle Avoidance Function	support
Cruising Speed	70km/h	Maximum Climb/Descend Speed	4m/s
Aircraft Weight	6.6kg (with battery)	Storage Temperature	-20℃ ~ +45℃
Battery Weight	3kg	Operating Temperature	-20℃ ~ +55℃

10X Laser Ranging POD

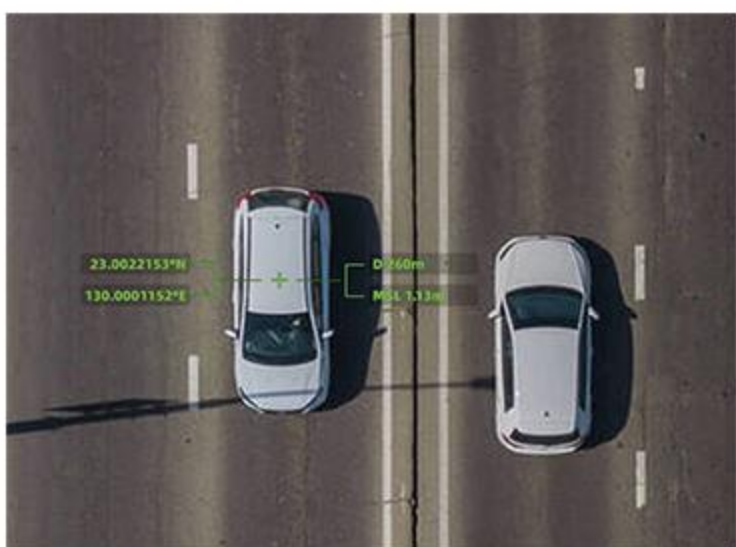
Visible / Infrared / Laser ranging / Tracking / Position acquisition



10X Enhanced optical zoom
Visible Light
Sensor Parameters



Focal length: 25mm
Effective Pixel: 640*512
Infrared Thermal
Imaging Parameters



1200m
Measuring Range



ZIYAN TECH

E-mail: sales@ziyanuav.com Website: www.ziyanuas.com
Address: Unit 101,Building 2,Zhongdian Hi-tech Park,7th Keji Road,Tangjiawan,Xiangzhou District,Zhuhai City,Guangdong Province, China

EFFICIENT AND INNOVATIVE

100 Minutes of Flight Endurance

- A wide range of operations in a single sortie, reducing frequency of landings and battery replacement

NEW INTERACTION

From Solid to Flat - Simplify the Complex

- Full touch screen control, user-friendly UI, game-like control experience
- Easy to use, reduced risk of misoperation



Payload

- 10X Laser Ranging POD
- Megaphone
- Searchlight



10X Laser Ranging POD



Megaphone + Searchlight

Accessories

- Handheld Ground Control Station
- Battery Box
- Portable Backpack



Handheld Ground Control Station



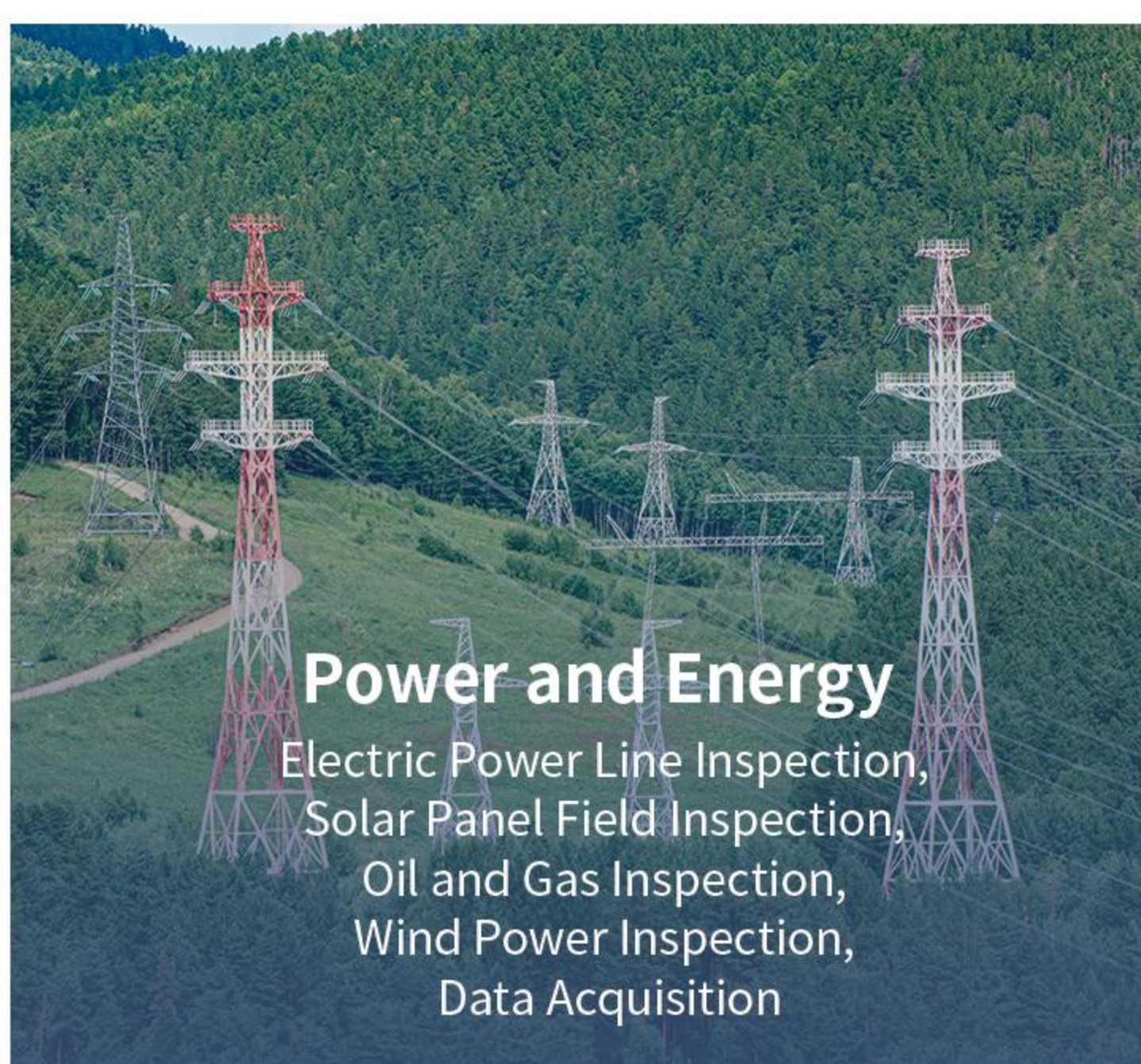
Battery Box



Portable Backpack

Industry Applications

Make it your best work partner



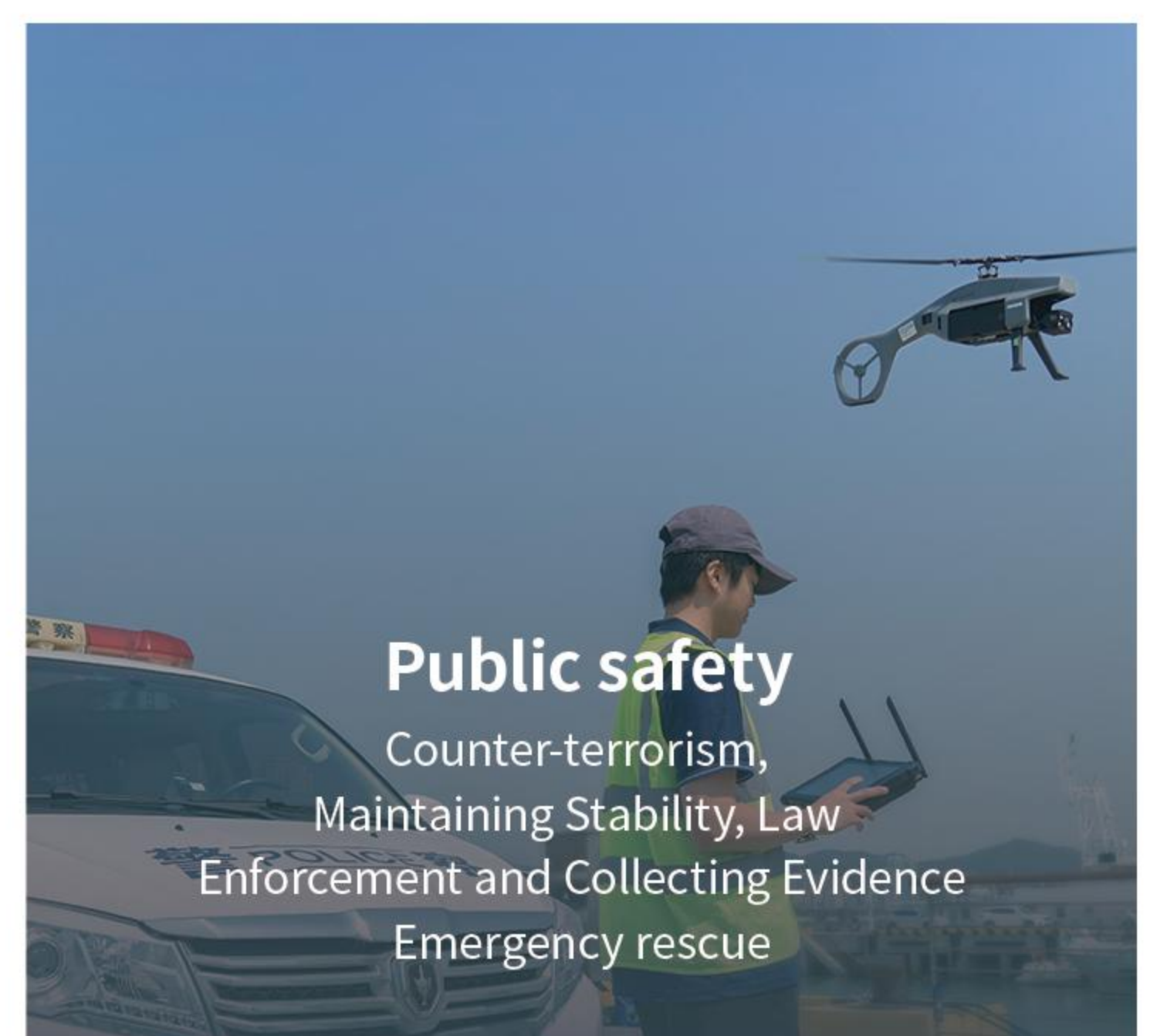
Power and Energy

- Electric Power Line Inspection,
- Solar Panel Field Inspection,
- Oil and Gas Inspection,
- Wind Power Inspection,
- Data Acquisition



Marine Applications

- Marine Monitoring and Inspection,
- Shoreline Mapping,
- Marine Patrolling,
- Marine Law Enforcement,
- Coastline Inspection



Public safety

- Counter-terrorism,
- Maintaining Stability, Law Enforcement and Collecting Evidence
- Emergency rescue

SWARM



30

30 Drones

Max Nodes per Swarm



Single Control

Multi-Formation Capability

AI

Visual Guidance

Attacking Moving Targets



High Durability

Auto-Replacement

F1-C Plus Flight Platform

Dimensions	Unfolded: 577*532*202mm Folded: 396*130*107mm
MTOW	4.6kg
Empty Weight	2.3kg (with battery)
Payload	2.3kg
Max Ascent Speed	10m/s
Endurance	45min (no payload)
Max Level Flight Speed	30m/s
Communication Range	6km
Service Ceiling	5200m
Frequency Band	1430-1444MHz
Wind Resistance	Level 6
Service Temperature	-10°C~+55°C

Ground Control Station

Screen Size	8.4 inches
Battery Capacity	75Wh(19500mAh)
Storage Capacity	16GB+512GB



Camera

Resolution	1920*1080
Lens	Optical Fixed Focus
Tracking Function	Supported
Detection Distance	Person: 100m, Vehicle: 300m
Recognition Distance	Person: 20m, Vehicle: 100m



Datalink Module

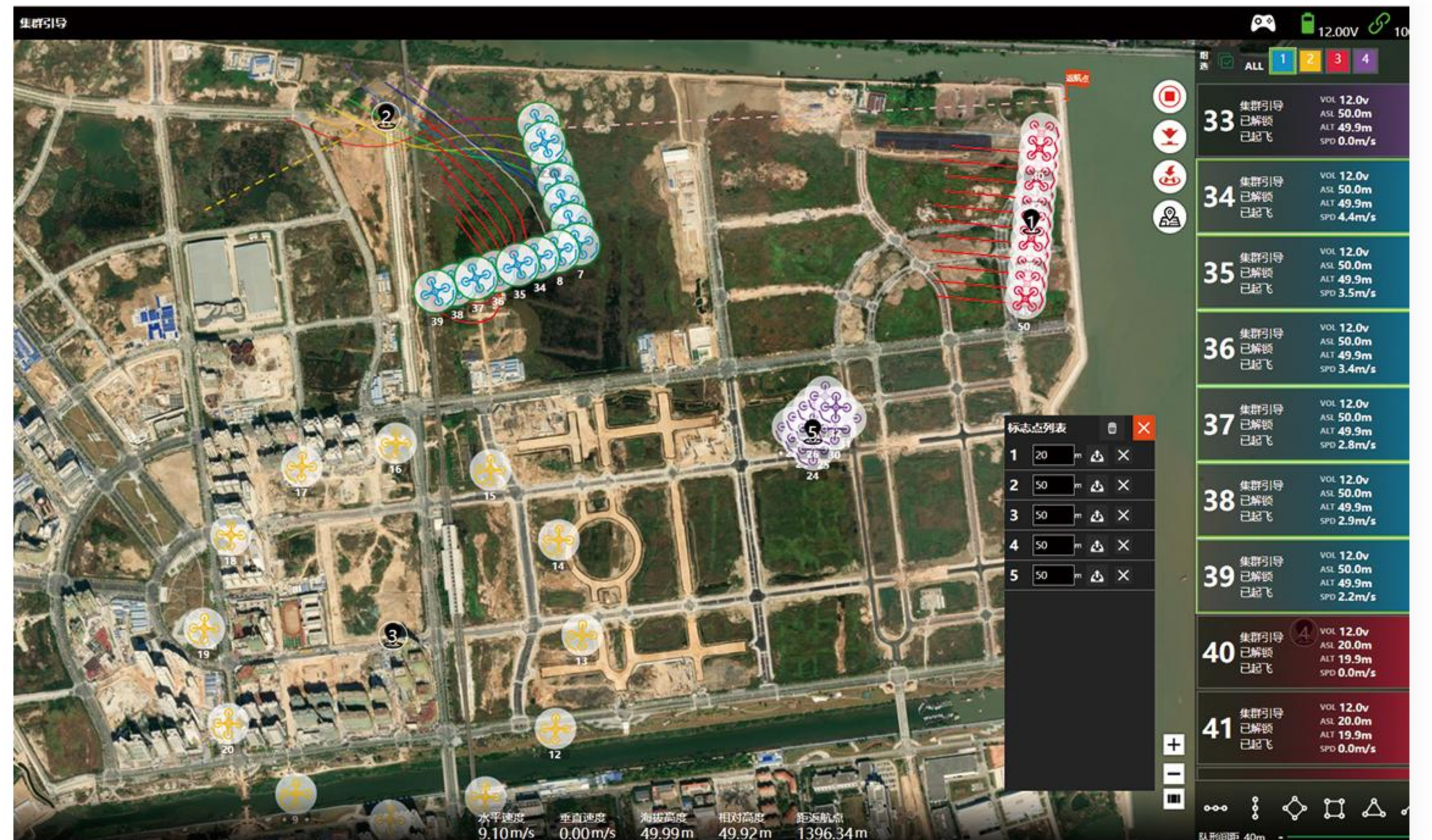
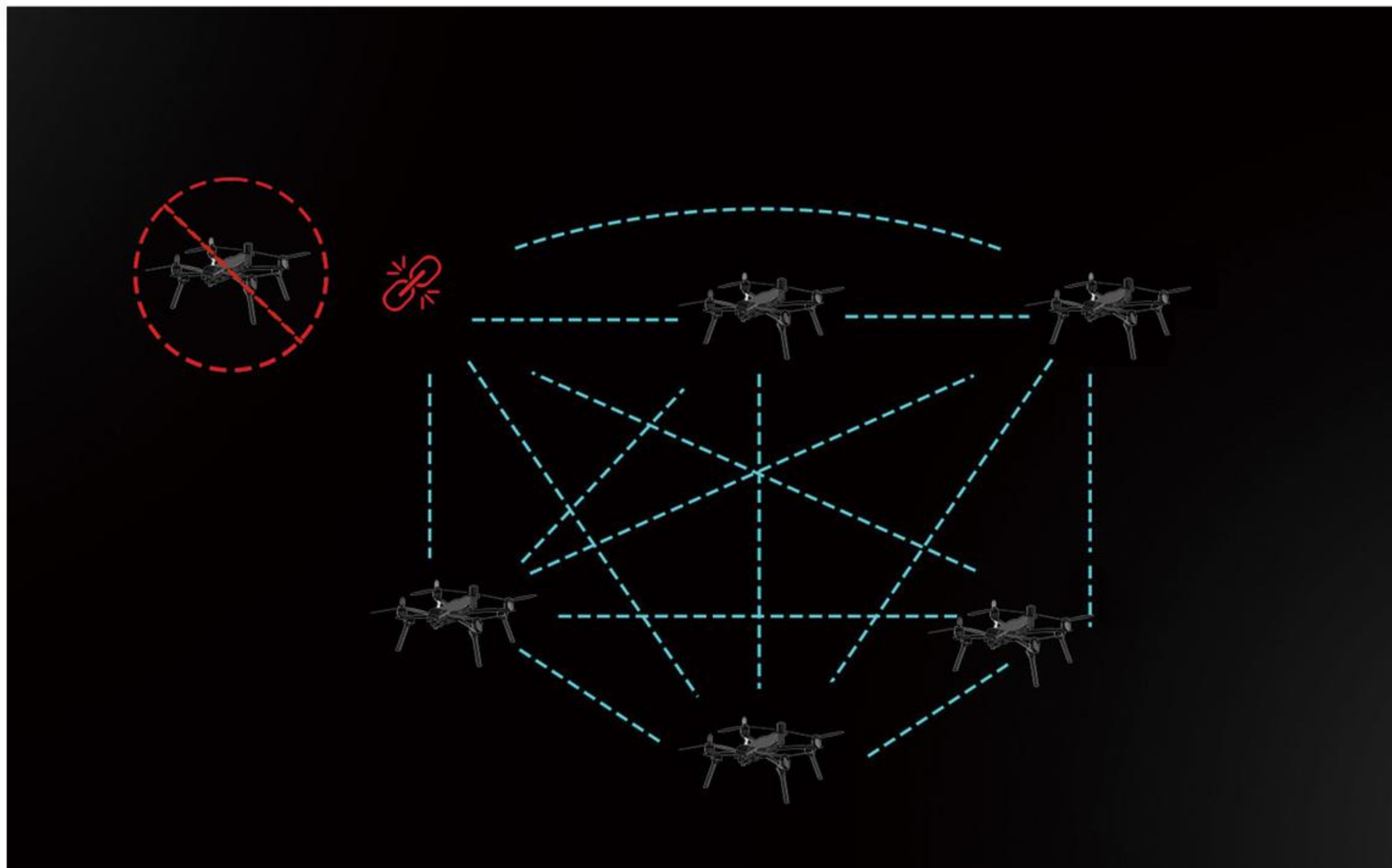
Communication Range	6km
Frequency Band	1430-1444MHz



Features and Advantages

Single-Operator Multi-Drone Control

Supports various formations that can be split or combined in real-time for different missions. In attack mode, execute commands with a single click, no path planning needed.



Decentralized System

In a decentralized swarm, if one drone is damaged, the others automatically fill its position, ensuring the integrity of the formation and the continuation of the mission.

AI Target Recognition and Tracking

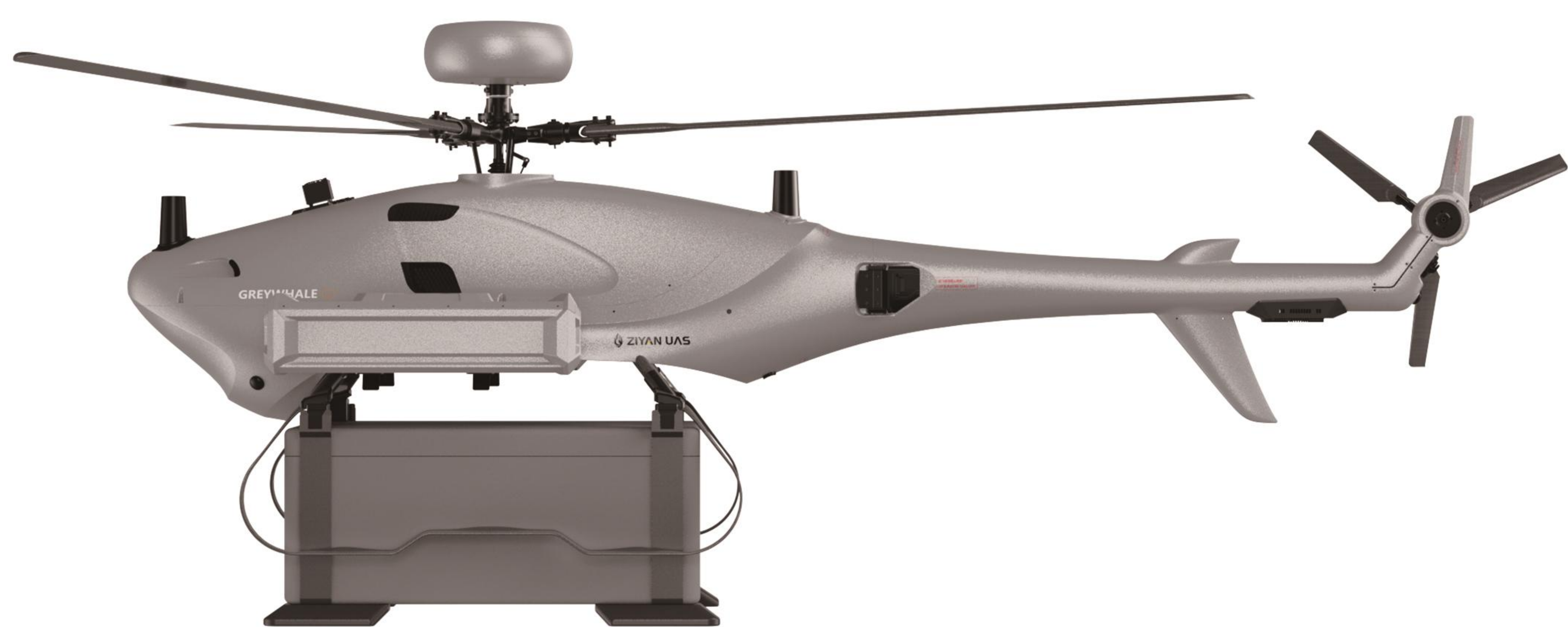
Enhanced by AI, supports autonomous target identification and continuous tracking, enabling visual guidance.



Support for Importing Coordinates from Other Devices

Support coordinate information of radar, from other drones or equipment and import to the swarm to improve the multi-domain cooperative combat features.

Unmanned Transport Helicopters



Grey Whale G1



15KG
Payload



30KM
BVLOS Transmission



40KM
Flight Distance



6000M
Max Altitude



Level 7
Wind Resistance



Parachute
Emergency

Dimensions	Without rotor blade: 1997*523*639mm	Disassembled	Fuselage: 1106*490*639mm Tail Boom: 932*130*450mm
Main Rotor Diameter	2275mm	Communication Range	30KM
Max Take-off Weight	45kg	Communication Frequency	1430-1444MHz
Max Payload	15kg	Wind Resistance	Level 7
UAV Weight	30kg (with battery)	Max Service Ceiling	6000m
Battery Weight	6.6kg	Hover Accuracy	Vertical: ±2.0m (GNSS) ±0.1m (RTK) Horizontal: ±1.5m (GNSS) ±0.1m (RTK)
Cruising Speed	50-75km/h	Max Climb/Descend Speed	5m/s
Max Speed	90km/h	Operating Temperature	-10°C~+55°C
Endurance	65min	Storage Temperature	-20°C~+60°C
Flight Range	60km	Parachute	Support
Recommended Cargo Compartment Dimensions	External Dimensions: 600*400*253mm Internal Dimensions: 540*340*250mm		

Certified for Civil UAV Airworthiness

Ensuring operational safety and reliability



Robust performance, High-efficiency delivery



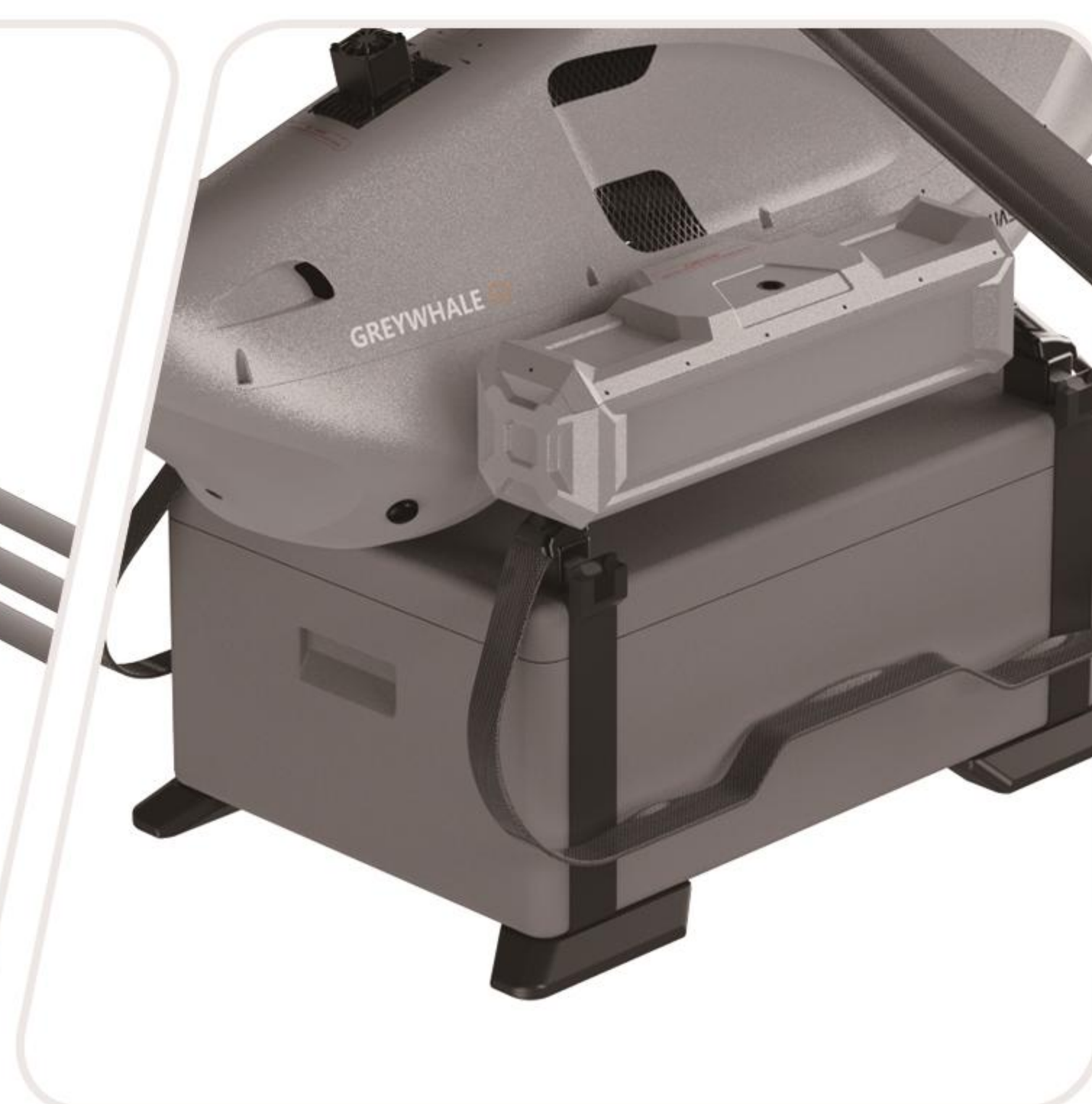
Three-Blades Configuration

Boost lift redundancy for improving stability, payload, and wind resistance.



Modular and Foldable

Dismantle modular fuselage and fold landing gear

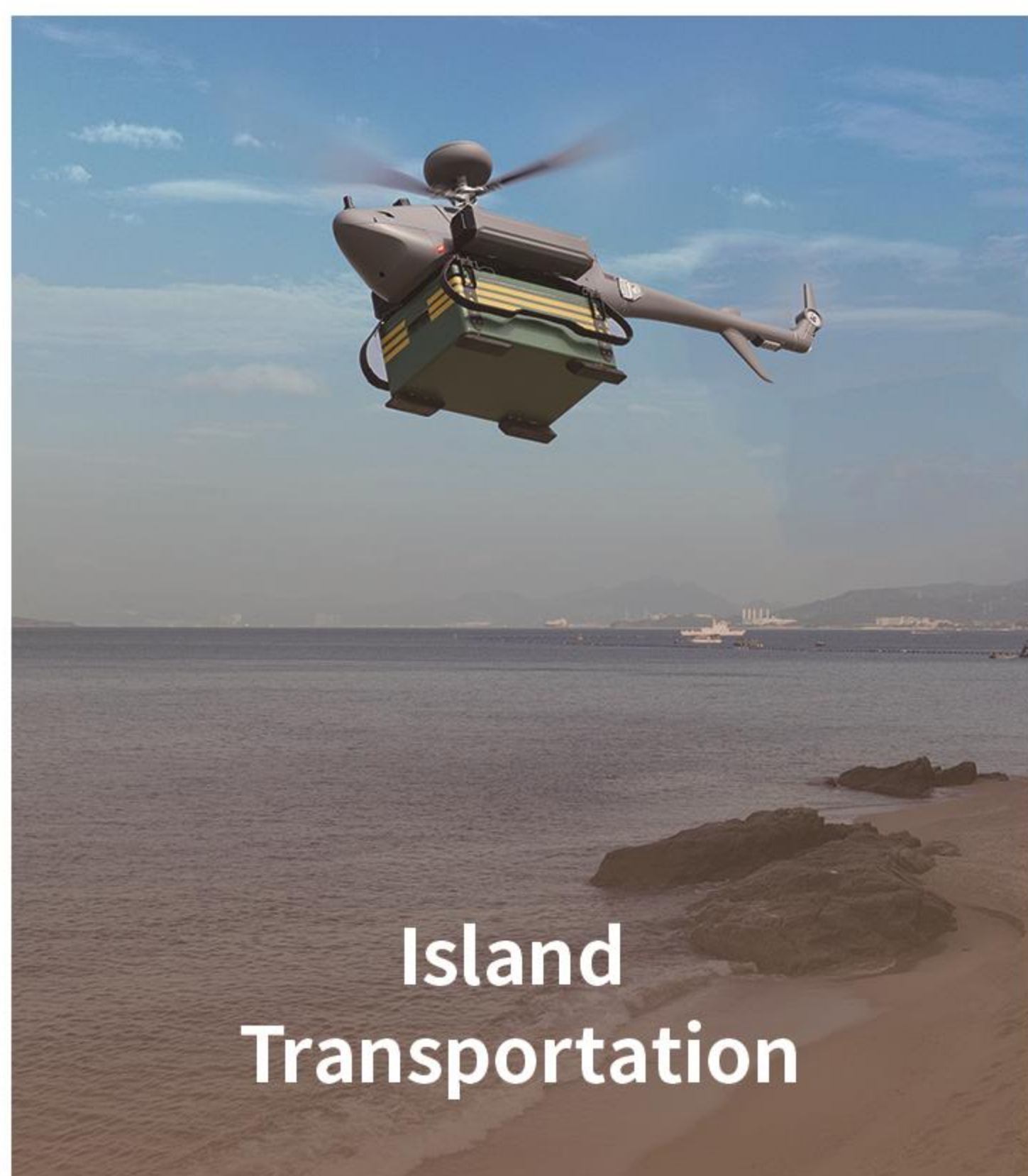


Cargo containment and Winch

Support dual transport modes for versatile operations

*Open to third-party interfaces for seamless integration

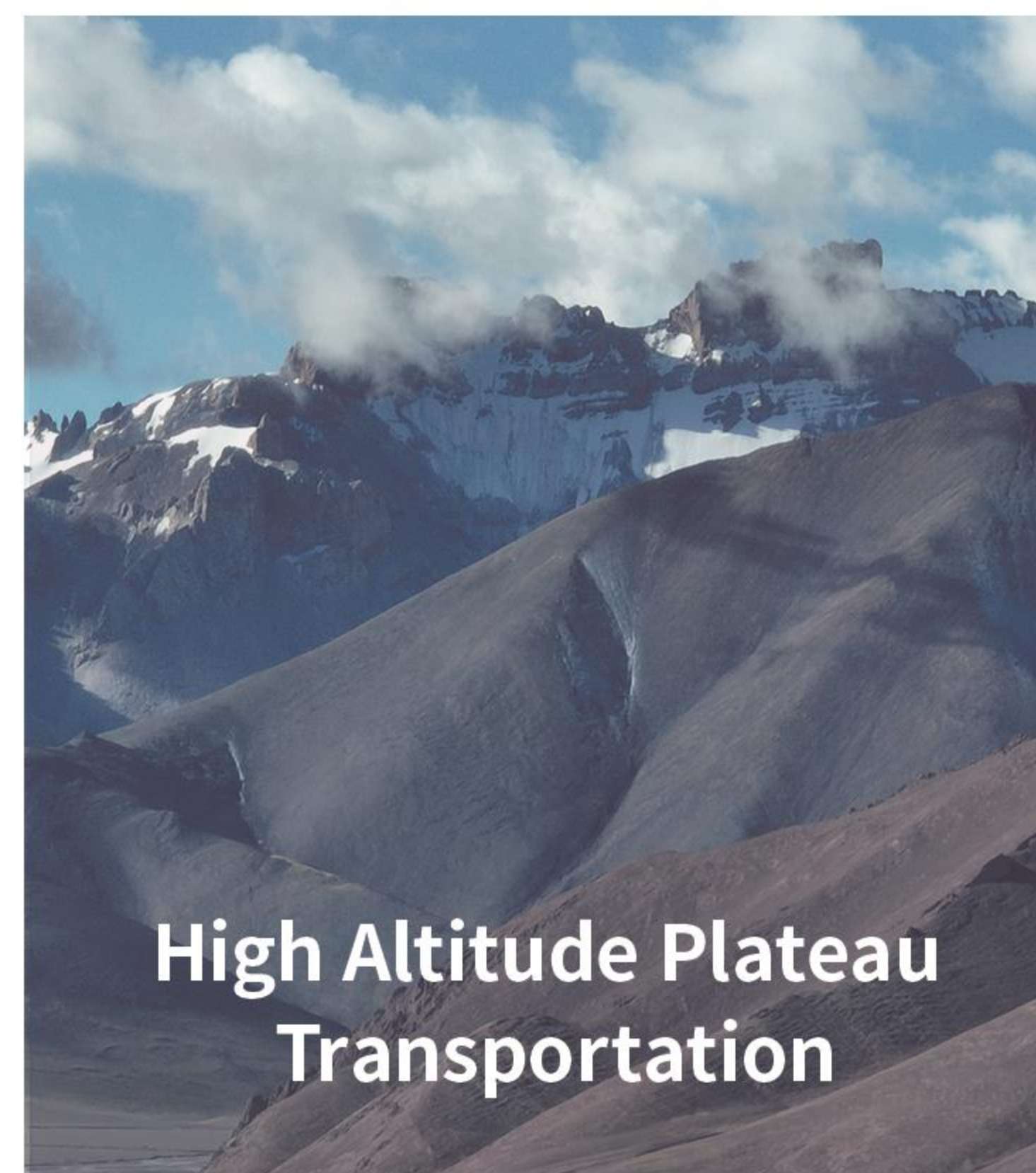
Industrial Applications **Make G1 Your Best Work Partner**



**Island
Transportation**



**Mountainous
Transportation**



**High Altitude Plateau
Transportation**